

USER GUIDE

Reporter

Release 9.2-MP3 (October 25, 2019)

Table of Contents

Table of Contents	2
Reporter	3
Reports Command	3
Reports Wizard	3
Available Reports	11

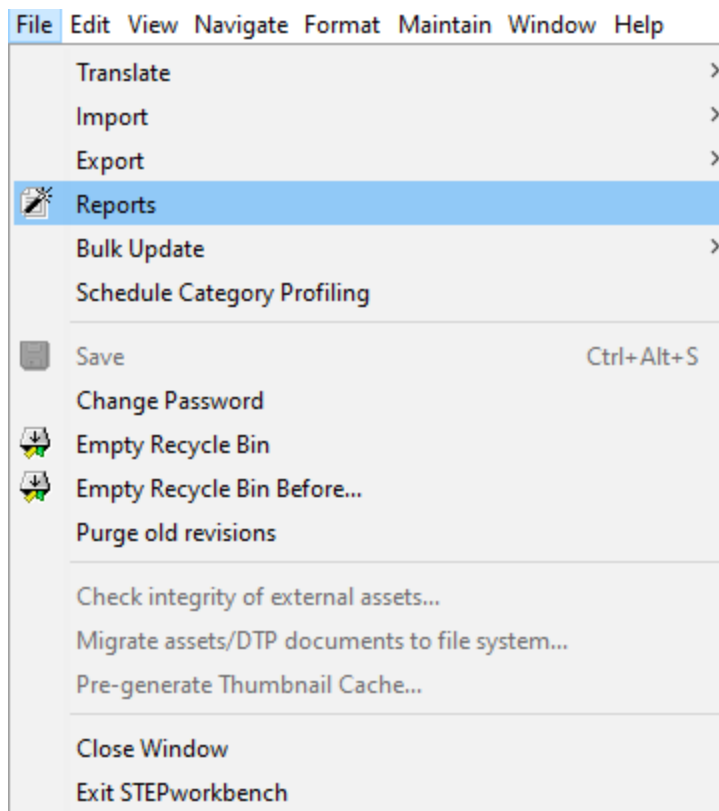
Reporter

STEP Reporter is a general reporting utility. A number of standard reports are available and are listed in the Available Reports topic. All reports are launched and managed from the workbench; refer the Getting Started / User Guide for a general introduction to the workbench user interface.

The information in this topic covers how to access and use the Reports wizard.

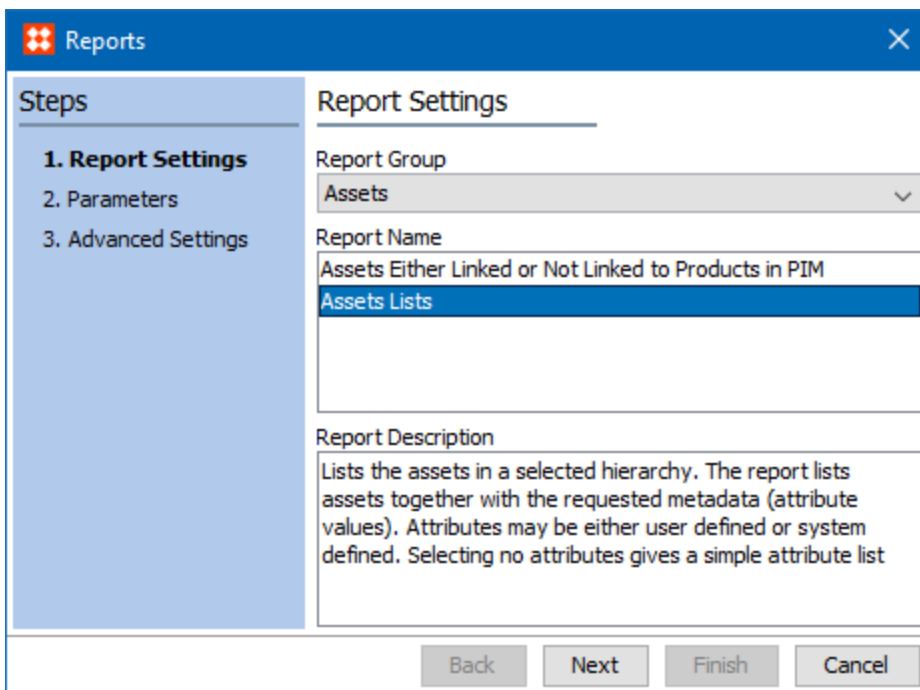
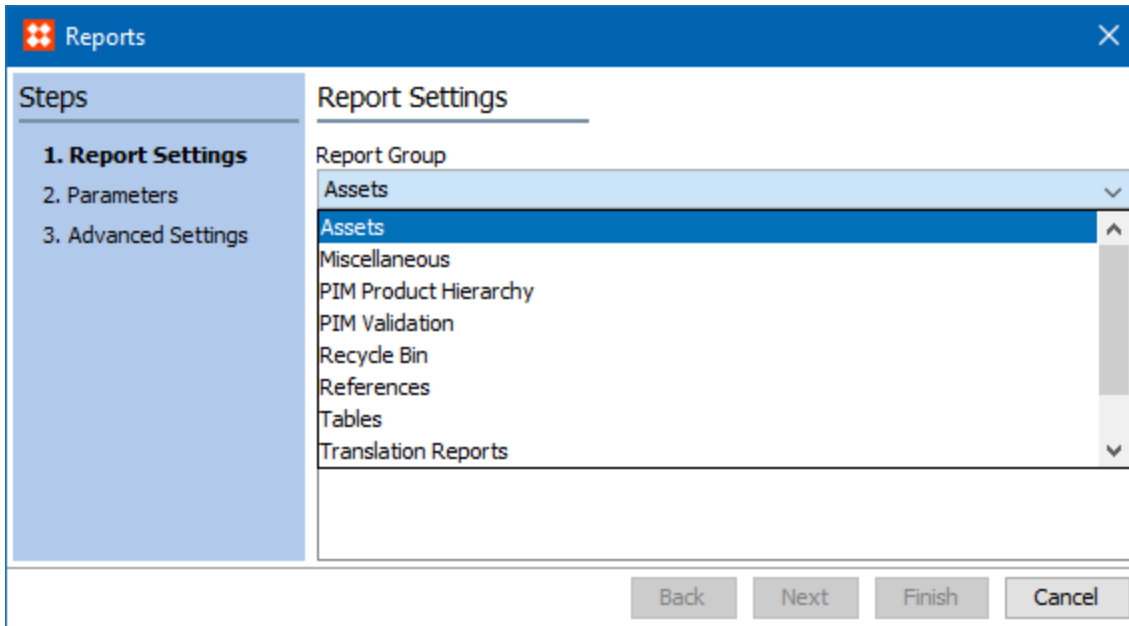
Reports Command

The **Reports** command is reached from the **File** menu.



Reports Wizard

When clicking **Reports** from the **File** menu, a Reports Wizard is launched. This wizard will guide the user through the steps required for producing a report.



Report Settings

- **Report Group:** The standard reports are divided into seven report groups. From the **Report Group** list, a group of reports can be selected. For example, select the group 'Assets'.
- **Report Name:** In the **Report Name** list, the reports belonging to a selected group are listed. For example, select the report 'Assets Lists'.

- **Report Description:** In this field a description of a selected report can be read. For example, the report 'Assets Lists' lists thumbnails of images with the selected attributes (metadata).

Parameters

The example in the following image is from the report 'Assets List'.

- **Include Image Assets:** If this checkbox is selected, then Assets of the type 'Image' will be included in the report. Otherwise, they are excluded.
- **Include Non-Image Assets:** If this checkbox is selected, then Asset that are not of the type 'Image' will be included in the report. Otherwise, they are excluded.

Important: You must select minimum one of the check boxes.

- **Context:** From this list it is possible to select in which context, the report should be run - e.g., English, German, or French.
- **Workspace:** From this list it is possible to select in which workspace, the report should be run - e.g., Main or Approved. Other workspaces, if they exist / were created prior to version 9.2, will also be selectable.

- **Asset Hierarchy:** In the hierarchy field, it is possible to select a node in the hierarchy, below which the report should run.
- **Attribute List:** Pressing the **Add** button will open a list of attributes, and you can select one or more from this list. It is also possible to remove selected attributes from the list using the **Del** button and to specify the sequence of the attributes in the report by using the **Up** and **Down** buttons.

Advanced Settings

- **Bookmark Report:** Optional: If the **Add Bookmark** checkbox is selected, it is possible to save the report settings in a bookmark. In this case you can, for example, reuse the 'Attribute List' and other specific settings for a new report.
- **Select Delivery Method:** It is needed to select a delivery method for the report.

There are two delivery methods: File and Email.

When **File** is selected and 'Finish' is clicked, a background process will begin. If successful, the report will be available under the Result flipper. Users can choose to View the report and then save as CSV or HTML, or save the report prior to viewing.

When clicking the View icon, the Report viewer is integrated into STEP Workbench. This means, that a click on an active link in the report viewer automatically navigates you to the selected object.

Assets Lists - Background Process

Background Process | Queue Info

Properties

Property	Value
Started by	USER8
Id	BGP_232008
Description	Assets Lists
Execution Server	doc-dev
Progress	Done
Status	succeeded
Created	Thu Jul 13 14:13:21 EDT 2017
Started	Thu Jul 13 14:13:24 EDT 2017
Finished	Thu Jul 13 14:13:25 EDT 2017
Processing Time	0 m 1 s
Time in Queue	0 m 3 s
# of warnings	0
# of errors	0

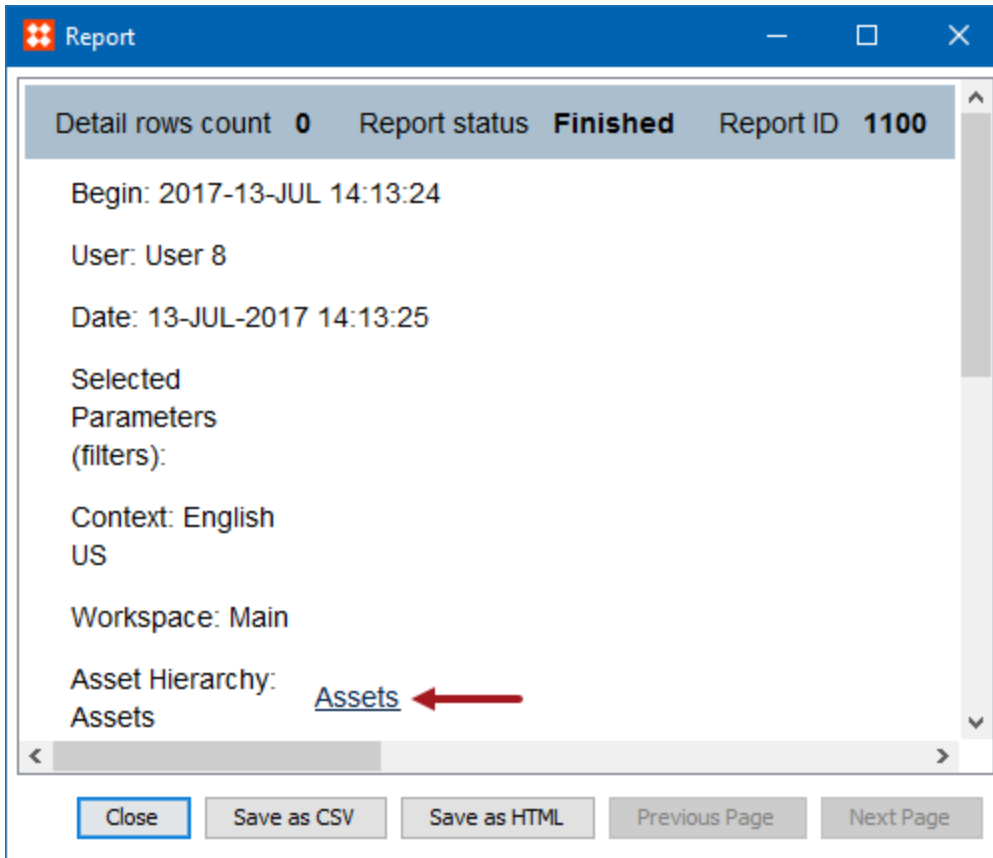
Execution Report

- 1 Report Generation service started
- 2 Started report generation.
- 3 Received report generator parameters.
- 4 Connected to PIMServer. Client ID: Report Generation: user8
- 5 Generating report with id 1100.
- 6 Report has 0 detail rows.
- 7 Report generation finished.
- 8 Report Generation service done

1-8 of 8 | Save... | Truncate

Result

Report file | **View** | Save as CSV | Save as HTML



If **Email** has been selected, the report will be attached in an email. It is needed to specify the format of the attached report. The formats can either be CSV or HTML.

Select Delivery Method

Email

Format: CSV

Address:

Title: Report: Assets Lists

Body:

File: Assets Lists

- **Schedule Process:** Select Now to start the process right away when you click Finish or schedule it using one of the other options.

Important: Consider the time zone of the application server compared to that of the workbench (the client) where the schedule is created or viewed. When scheduling a job, the local time zone is displayed in the workbench, but the time zone of the server is used to run the background process. Although displayed, the time zone of the client is not included in the instruction to the server to run the job. This can cause confusion about when the job will run since the scheduled time is not automatically converted to accommodate potential differences in time zones.

The options for the Later, Weekly, and Monthly selections are as follows:

Later runs the process only once at the specified date and time.

Schedule Process

Start

Now Start at (hh:mm): 17:03
 Later Start on (yyyy-mm-dd): 2017-07-13
 Weekly
 Monthly

Start at Thu Jul 13 17:03:00 EDT 2017

Weekly runs the process on the days select in the specified period until the process is deleted.

Schedule Process

Start

Now Start at (hh:mm): 17:03
 Later Start on (yyyy-mm-dd): 2017-07-13
 Weekly End on (yyyy-mm-dd): -
 Monthly Every:

Mon Sat
 Tue Sun
 Wed
 Thu
 Fri

Start every Mon 17:03:00 EDT, starting Thu Jul 13 2017

Monthly runs the process every month at the specified day and time until the process is deleted.

Schedule Process

Start

<input type="radio"/> Now	Start at (hh:mm):	<input type="text" value="17:03"/>
<input type="radio"/> Later	Start on (yyyy-mm-dd):	<input type="text" value="2017-07-13"/>
<input type="radio"/> Weekly	End on (yyyy-mm-dd):	<input type="text" value="-"/>
<input checked="" type="radio"/> Monthly	Every:	<input type="text" value="First"/>
		<input type="text" value="Monday"/>

Start every first Mon 17:03:00 EDT, starting Thu Jul 13 2017

- **Process Name:** The wording input into this field goes into the Description of the Background Process.

Available Reports

Reports are divided out by Report Group. Choose a Report Group and the applicable reports will display under Report Name. Click on a report to see its Report Description.

Report Group	Report Name	Description of Report Content
Assets	Assets Either Linked or Not Linked to Products in STEP PIM	This report lists all assets in one selected hierarchy that are either referenced or not referenced by products in another selected hierarchy.
Assets	Assets Lists	This report lists the assets in a selected hierarchy. The report lists assets together with the requested metadata (attribute values). Attributes may be either user defined or system defined. Selecting no attributes gives a simple attribute list.
Miscellaneous	Leading and Trailing Spaces	This report lists URLs of objects with leading or trailing spaces in their names.
PIM Product Hierarchy	Orphaned Product Values	This report lists all products and their values where the attribute is not linked (valid) in the product path.
PIM Product Hierarchy	Product Attributes Linked To A Product	This report lists all product attributes that are directly linked to the selected product hierarchy node. Optionally lists inherited attributes and those linked below the selected product.
PIM Product Hierarchy	Products Linked Multiple Times in Classification	This report lists products which are linked to more than one location in the selected classification hierarchy.
PIM Product Hierarchy	Products Linked Only Once in Classification	This report lists products which are linked to only one location in the selected classification hierarchy.
PIM Product Hierarchy	Products Not Linked in Classification	This report lists products which are not linked anywhere in the selected classification hierarchy.
PIM Product Hierarchy	Products and Attribute Values	This report lists all products within the selected product node. There are options to include inherited values, empty values, and units.

Report Group	Report Name	Description of Report Content
PIM Product Hierarchy	Products and Selected Product Attribute Values	This report lists all the products in the selected node in the PIM, and allows you to select the product attributes and their values to extract for each product. You may select a node either in the Primary Product Classification or an Alternate Classification.
PIM Validation	Product-attributes with invalid numbers	This report lists all objects with values that were legal but contains spaces.
Recycle Bin	Classifications in the Recycle Bin	This report lists all classifications in the Recycle Bin. You can limit the report to items with or without references or those in use or not.
Recycle Bin	Documents in the Recycle Bin	This report lists all documents in the Recycle Bin. You can limit the report to items with or without references or those in use or not.
Recycle Bin	Images in the Recycle Bin	This report lists all images in the Recycle Bin. You can limit the report to items with or without references or those in use or not.
Recycle Bin	Products in the Recycle Bin	This report lists all products in the Recycle Bin. You can limit the report to items with or without references or those in use or not.
References	Classification Product Links	This report lists all links from a product below a source root to a Classification below a target root, and count them according to link type, source and target object type. The references will be found global, but the below search will be workspace and context dependent.
References	Classification to Classification References	This report lists all links from a Classification below a source root to a Classification below a target root, and count them according to link type, source and target object type. The references will be found global, but the below search will be workspace and context dependent.
References	Product References	This report lists the product-oriented references that are in effect for products within the selected product classification.
References	Product to Product References	This report lists all references from a product below a source root to a product below a target root, and count them according to reference type, source and target object type. The references

Report Group	Report Name	Description of Report Content
		will be found global, but the below search will be workspace and context dependent.
Tables	Localization of PIM Tables	This report lists the Tables in a selected hierarchy.
Translation Reports	Translation status report of products below a PIM node	This report Lists a user defined selection of translation status' of products below a PIM product or classification node.
Value Reports	Find LOV with same value	This report lists all LOV which have multiple identical values (count values) and list contexts in which values are defined by priority.
eCatalogs	Missing Product Attribute Values	This report lists all products that do not have values for selected attributes in eCatalog selection list.
eCatalogs	Price Integrity	This report lists all products from eCatalog selection list having no prices or having a higher price for a higher quantity break.